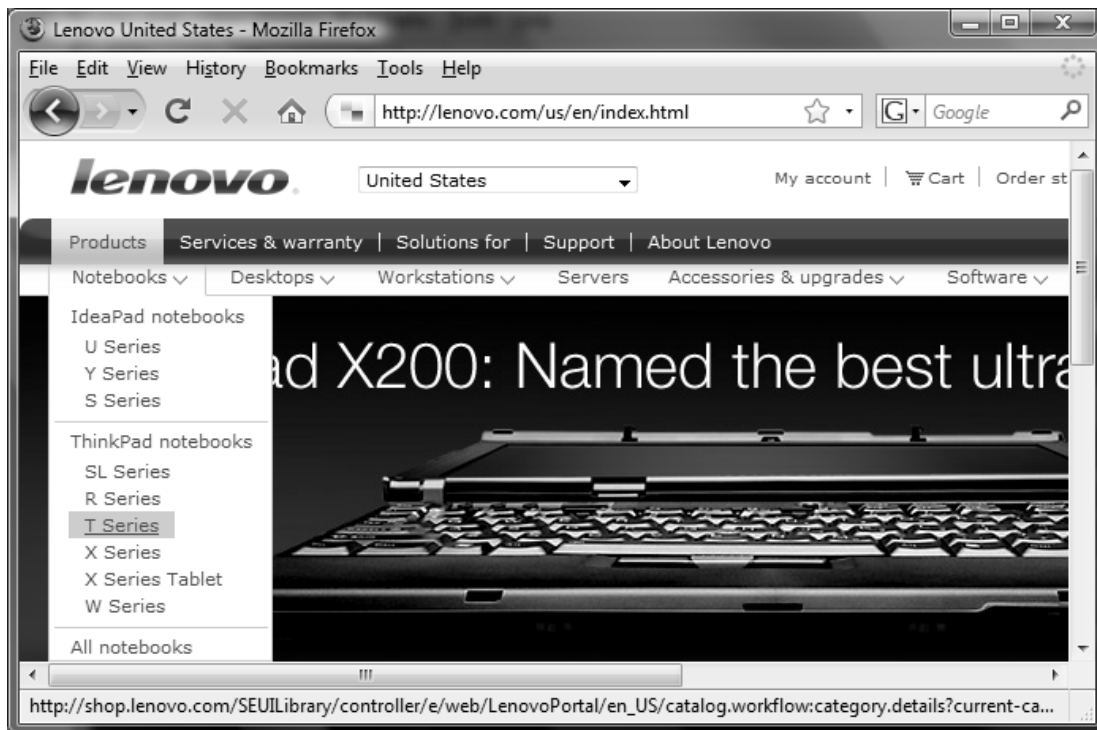


# Spry Menu Bar

The *Spry Menu Bar* allows you to add very user-friendly dynamic menus that allow for great organization to your website navigation. It builds a hierarchy of links to the inner pages of your site. The main section headings show up on the page all of the time, but the other links are only displayed when the user rolls the mouse over the top link.

Lenovo's website, for example, uses this type of menu. In the Products section, Lenovo organizes their products in categories such as, Notebooks, Desktops, Workstations, etc. When the user rolls over Notebooks, a sub-menu of the families of notebooks appears.



Building these hierarchical menus from scratch is surprisingly difficult! It involves a combination of HTML, JavaScript and CSS. Luckily, Dreamweaver will be writing that code for us!

## What is JavaScript?

JavaScript is the primary client-side programming language used by websites. (HTML is not really a programming language; it is more of a formatting language.) Saying that it is a client-side language means that it is executed "on the client-side" or by the browser – just like HTML and CSS. This can be beneficial since the browser can execute code without sending information to the server.

JavaScript is commonly used to perform the following operations:

- **Image Rollovers**
- **Form Validation**
- **Open new browser windows**
- **Dynamic Menus**
- **Making content disappear!**

## What is Adobe Spry?


Spry is Adobe's free open-source Ajax Framework. An Ajax Framework is simply a collection of widgets and JavaScript functions that allow you to add functionality to your site quickly and easily. Some of the most common frameworks include Prototype, scriptaculous, and Dojo.

The best thing about Adobe's Spry Framework is that elements of it are built right into Dreamweaver. That means you may add Spry features without having to do that from scratch on the code side.

If you find that you require further customization, you can learn about the CSS classes that Dreamweaver has added for you. In fact, we will do some customization below.

Additional information on Spry:

- **Form Validation** – Later in this course we will be using the Spry Form Validation Widgets.
- **Further capabilities of Spry** are discussed in both of these courses *Advanced Dreamweaver / Introduction to Adobe Spry*.

<p><b>NOTE</b></p> 	<p style="text-align: center;"><b>What happened to the Pop-up Menu Behavior?</b></p> <p>Prior to the development of Spry, Dreamweaver provided a Behavior called "Show/Hide Pop-up Menu" to create similar menus. It has been deprecated (eliminated) from Dreamweaver in favor of the Spry Menu Bar.</p> <p>If you are editing a page which already has a Pop-up Menu in it, you may still edit that Menu using the Behaviors Panel. However, you may not add new menus.</p> <p>These menus were a bit buggy and did not offer the features of the Spry Menu Bar.</p>
--	--

## Backward Compatibility

So, what happens if your user's browser cannot interpret these menus? What if they have JavaScript or CSS turned off? No problem! These menus degrade nicely. Click "Turn Styles Off" in the Properties Inspector to see what it will look like.

1. If JavaScript is turned off, users can still click on the top level links. You should provide further links within each section to the inner pages.
2. If CSS is turned off, users will see a bulleted list - not as pretty as the original, but functional.

## Insert the Menu Bar using Dreamweaver

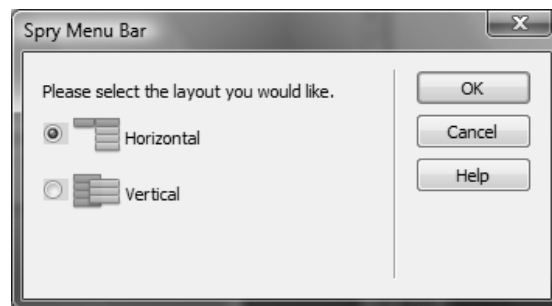
Inserting the Spry Menu Bar is extremely easy. Try one of the following:

1. Find the Spry category in the Insert Panel and look for the Menu icon (shown below).



2. Or, using the Insert drop-down at Insert → Spry → Spry Menu Bar

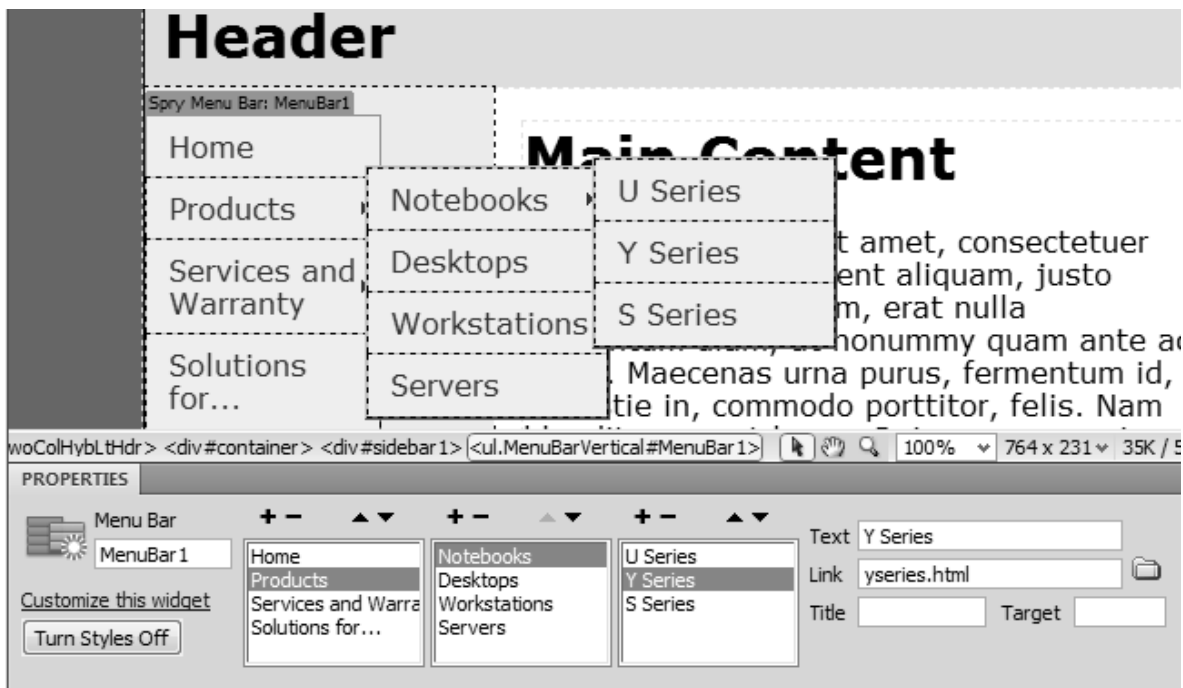
Next, choose whether you would like a horizontal or vertical menu. This will set the look of the top level of menu items.



That's it! You have added a Menu Bar. Now, to add your own links, you will need to customize the menu. (See below!)

## Customizing the Menu Bar Using Dreamweaver

To add your text to the menu, click on the Menu Bar and open the Properties Window (as shown below). Dreamweaver allows three levels of menus. To add a sub item, simply click on the top level link and then click the plus (+) On the far right side add the text to appear in the menu and the URL of the link.



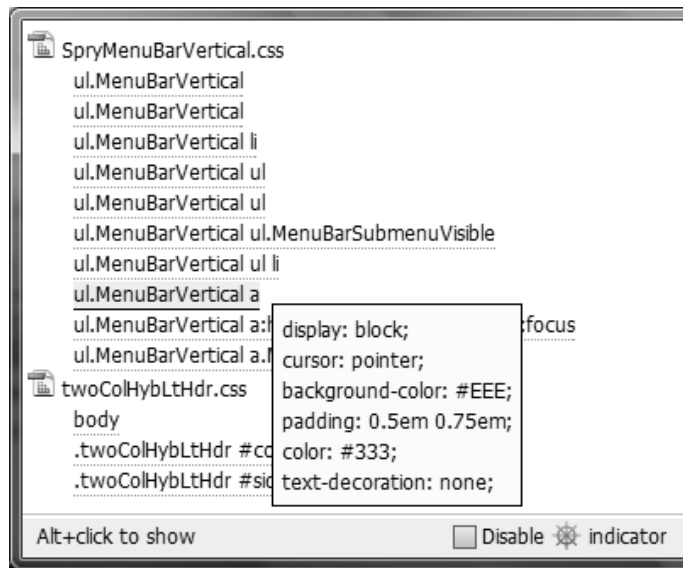
## Examining Applied Styles Using the New Code Navigator

To change the text color, background color or other properties, you will have to edit the CSS styles. While this does require some knowledge of CSS, you need not be a CSS master. In fact, this is a great time to use the Code Navigator, brand new in CS4, to examine which styles and classes Dreamweaver wrote for us.

To access the Code Navigator, hover over the text you would like to change. When the *Ships Wheel* icon appears click it. (Or, you may Alt-click on your text.)



The small window which appears shows all of the styles which apply to this selection. Don't worry if these names don't mean much to you. Roll over them and you will see all of the properties for that selector. Even better, if you click a selector, the CSS panel populates with all options for that selector.




If you want to change the background color, look for the *background-color* property. You will find it has been set under *ul.MenuBarVertical a* or *ul.MenuBarHorizontal a*.

The Spry documentation website offers some helpful tips on how to edit these styles. Below you will find a chart which explains how to change the various background color styles.

Color to change	CSS rule for vertical or horizontal menu bar	Relevant properties and default values
Default background	<code>ul.MenuBarVertical a, ul.MenuBarHorizontal a</code>	<code>background-color: #EEE;</code>
Background color when mouse pointer moves over it	<code>ul.MenuBarVertical a:hover, ul.MenuBarHorizontal a:hover</code>	<code>background-color: #33C;</code>
Background color when in focus	<code>ul.MenuBarVertical a:focus, ul.MenuBarHorizontal a:focus</code>	<code>background-color: #33C;</code>
Menu Bar item color when mouse pointer moves over it	<code>ul.MenuBarVertical a.MenuBarItemHover, ul.MenuBarHorizontal a.MenuBarItemHover</code>	<code>background-color: #33C;</code>
Submenu item color when mouse pointer moves over it	<code>ul.MenuBarVertical a.MenuBarItemSubmenuHover, ul.MenuBarHorizontal a.MenuBarItemSubmenuHover</code>	<code>background-color: #33C;</code>

Below are the styles which set the text colors:

Style to change	CSS rule for vertical or horizontal menu bar	Relevant properties and default values
Default text	ul.MenuBarVertical a, ul.MenuBarHorizontal a	color: #333; text-decoration: none;
Text color when mouse pointer moves over it	ul.MenuBarVertical a:hover, ul.MenuBarHorizontal a:hover	color: #FFF;
Text color when in focus	ul.MenuBarVertical a:focus, ul.MenuBarHorizontal a:focus	color: #FFF;
Menu Bar item color when mouse pointer moves over it	ul.MenuBarVertical a.MenuBarItemHover, ul.MenuBarHorizontal a.MenuBarItemHover	color: #FFF;
Submenu item color when mouse pointer moves over it	ul.MenuBarVertical a.MenuBarItemSubmenuHover, ul.MenuBarHorizontal a.MenuBarItemSubmenuHover	color: #FFF;

 <p><b>NOTE</b></p>	<p><b>What do you mean I <i>have</i> to learn CSS?!?!</b></p> <p>If you thought that Dreamweaver was going to do <i>all</i> of the coding for you, I am sorry to say that it will not.</p> <p>It is a very helpful tool, but as you just saw, knowledge of CSS and HTML will make Dreamweaver a much more powerful tool for you.</p>
--	--

## Customize the Menu Bar with Direct Coding

With just a little more hand-coding, you can make modifications that Dreamweaver won't even allow! Let's say you want to have *four* levels of menus. Dreamweaver's Properties Inspector only allows for three. Well, a quick examination of the code shows that each link which has sub-items is assigned the class "**MenuBarItemSubmenu**", and has a new unordered list (<ul>) nested inside the list item (<li>).

You may make another sub-menu by adding that class and a new nested list. Below find the code that Dreamweaver wrote for us.

```
<ul id="MenuBar1" class="MenuBarVertical">
  <li><a href="index.html">Home</a> </li>
  <li><a href="#" class="MenuBarItemSubmenu">Products</a>
    <ul>
      <li><a href="#" class="MenuBarItemSubmenu">Notebooks</a>
        <ul>
          <li><a href="#">U Series</a></li>
          <li><a href="yseries.html">Y Series</a></li>
          <li><a href="#">S Series</a></li>
        </ul>
      </li>
      <li><a href="#">Desktops</a></li>
      <li><a href="#">Workstations</a></li>
      <li><a href="#">Servers</a></li>
    </ul>
  </li>
  <li><a class="MenuBarItemSubmenu" href="#">Services and Warranty</a>
    <ul>
      <li><a class="MenuBarItemSubmenu" href="#">Item 3.1</a>
        <ul>
          <li><a href="#">Item 3.1.1</a></li>
          <li><a href="#">Item 3.1.2</a></li>
        </ul>
      </li>
      <li><a href="#">Item 3.2</a></li>
      <li><a href="#">Item 3.3</a></li>
    </ul>
  </li>
  <li><a href="#">Solutions for...</a></li>
</ul>
```

In the code below, we have added a new unordered list below (in *italics*) will make the fourth level menu:

```
<li><a href="#" class="MenuBarItemSubmenu">Notebooks</a>
  <ul>
    <li><a href="#">U Series</a></li>
    <li><a href="yseries.html" class="MenuBarItemSubmenu">Y Series</a>
      <ul>
        <li><a href="#">Level 4 - 1</a></li>
        <li><a href="yseries.html" class="MenuBarItemSubmenu">Level
4 - 2</a></li>
        <li><a href="#">Level 4 - 3</a></li>
      </ul>
    </li>
    <li><a href="#">S Series</a></li>
  </ul>
</li>
```





## Exercise 7: Add a Spry Menu Bar

15 to 20 minutes

In this exercise you will replace the text in the left column on **index.html** with a Spry Menu. When you are done, it might look like this:



1. Open **index.html**. Delete the text in the left column and then insert a Spry Menu Bar (choose Vertical). Add the following links for the top level menu.

Text Link	Page to link to
Home	index.html
Dogs	dogs.html
Cats	cats.html
Locations	locations.html
Contact Us	contactus.html
FAQ	faq.html

2. Now add three sub-menu items each for Dogs and Cats. These will link to six pages on each dog and cat. See the following chart for the page names (feel free to use real names of your choice):

Text Link	Page to link to
Dog 1	dog1.html
Dog 2	dog2.html
Dog 3	dog3.html
Cat 1	cat1.html
Cat 2	cat2.html
Cat 3	cat3.html

3. Test your page in the browser or using Live View. Do the menus work?

### Try this!

- Use the CSS Panel to change the text or background color of your menu. This will involve some exploration of the CSS classes. *Tip: Adobe's website has a great deal of information on Spry. Some links are in Appendix C: Resources.*
- Add additional levels to the menu using the code method explained earlier.
- Read about other features of the menus or try to use one of the following Spry Widgets: *Accordion, Tabbed Panels, Collapsible Panel or Tooltip.*

## Possible Solution to Exercise 7

Saved as `done_versions/index-ex07-done.html`

```
<ul id="MenuBar1" class="MenuBarVertical">
  <li><a href="index.html">Home</a>      </li>
  <li><a href="dogs.html" class="MenuBarItemSubmenu">Dogs</a>
    <ul>
      <li><a href="dog1.html">Dog 1</a></li>
      <li><a href="dog2.html">Dog 2</a></li>
      <li><a href="dog3.html">Dog 3</a></li>
    </ul>
  </li>
  <li><a href="#" class="MenuBarItemSubmenu">Cats</a>
    <ul>
      <li><a href="cat1.html">Cat 1</a></li>
      <li><a href="cat2.html">Cat 2</a></li>
      <li><a href="cat3.html">Cat 3</a></li>
    </ul>
  </li>
  <li><a class="MenuBarItemSubmenu" href="locations.html">Locations</a>
    <ul>
      <li><a class="MenuBarItemSubmenu" href="#">Item 3.1</a>
        <ul>
          <li><a href="#">Item 3.1.1</a></li>
          <li><a href="#">Item 3.1.2</a></li>
        </ul>
      </li>
      <li><a href="#">Item 3.2</a></li>
      <li><a href="#">Item 3.3</a></li>
    </ul>
  </li>
  <li><a href="contactus.html">Contact Us</a></li>
  <li><a href="faq.html">FAQ</a></li>
</ul>
```